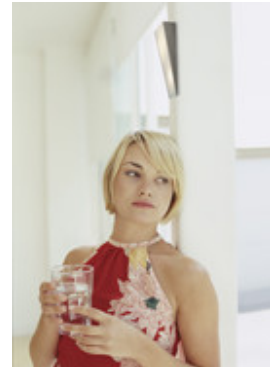
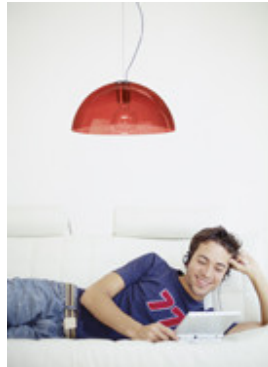


1 What do you want to do with your lighting?

An important question that people often overlook is: what do you want to do with your lighting? Read, work, create atmosphere, etc.? This is quite important if you are choosing a light to hang above a table. Table lighting seems simple but everyone uses their table differently. Some people want to sit around the table with friends, others use it for work, children do their homework on the table, others use it for their hobby and granddad likes to read his newspaper at the table....



2 What type of lighting should I choose?

Roughly speaking, there are two types of lighting, more specifically **ambient lighting** and **functional lighting**.



Ambient lighting can be broken down into: Accent lighting which allows you to highlight certain things in your interior. Lighting objects are items you use to upgrade your interior, which also emit light, and create a warm atmosphere. Indirect lighting is an invisible light source. e.g., strip lighting hidden behind a false ceiling that projects a pleasant light onto the wall.

Functional lighting always has a clear aim. This lighting is not so much about creating an atmosphere, but is more about providing light.

Functional lighting can be broken down into: Basic lighting, the main lighting type for lighting an entire room. Orientation lighting usually has a lower light output and is used more often to define, e.g., a driveway, the garden path or the landing so that you can find your way in the dark as well. Reading lights make sure your eyes don't get too tired and allow you to enjoy a good book on a dark winter evening



3 What luminaire should I use to meet my requirements?

Beeston Lighting has a very wide range of all possible types of lighting:

- chandeliers;
- wall lights;
- ceiling lights;
- floor lamps;
- table lamps;
- reading/desk lamps;
- spots;
- recessed spots;
- strip lighting luminaires;
- outdoor lighting

However, it is very important that you always ask yourself whether these luminaires allow you to do what you want to do.

4. What style should I choose?

The 3 previous questions are strictly rational this question is more a matter of personal taste and emotion!! "Do I like it? Does it fit in with my interior?"

Beeston Lighting has something to suit everyone's taste. Some examples:

- contemporary
- harmony
- stylish
- Scandinavian simplicity (Essentials Scandinavian)
- warm colours (Essentials Colours)



5. Which light source and wattage should I choose?

10% of the housekeeping money goes on power every year. It is important to spend it wisely. Choosing the correct light source can help you in this. If you answered the first question, you know what you need the lighting for: does it have to stay on long periods of time, is a good light output important, etc. Once you know all this you can go in search together with a salesperson to find a luminaire that meets your needs, with the most efficient light source.

Calculation:

Every evening the lamp next to the front door is on from six in the evening to midnight (= 6 hours a day), 5 days a week from October to February (20 weeks). Let's make the comparison between a luminaire with a halogen (300W), an incandescent lamp (100W) and a LED (3W). The cost price of 1 kWh is €0.15.

Halogen 300W

A 300W lamp that is on for 1 hour uses 0.3 kWh and therefore costs you €0.045 an hour (€0.15 x 0.3).
6 hours a day x 5 days a week x 20 weeks = 600 burning hours.
Cost price: 600 x €0.045 = €27.00

Incandescent lamp 100W

A 100W lamp that is on for 1 hour uses 0.1 kWh and therefore costs you €0.015 an hour (€0.15 x 0.1).
6 hours a day x 5 days a week x 20 weeks = 600 burning hours.
Cost price: 600 x €0.015 = €9.00

LED 3W

A 3W lamp that is on for 1 hour uses 0.003 kWh and therefore costs you €0.00045 an hour (€0.15 x 0.003).
6 hours a day x 5 days a week x 20 weeks = 600 burning hours.
Cost price: 600 x €0.00045 = €0.27



A matt or a clear lamp?

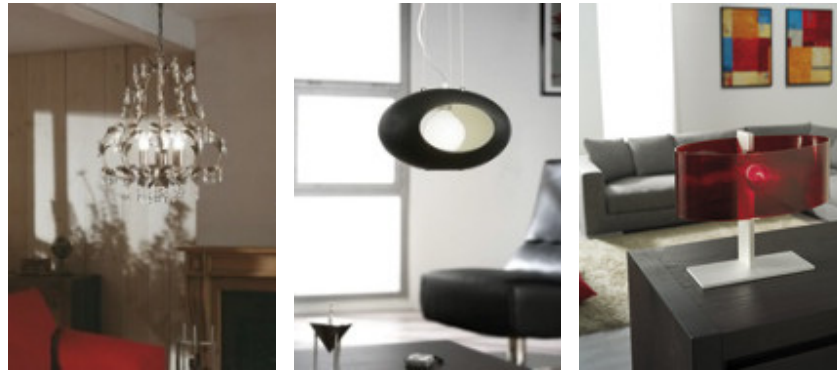
A matt lamp emits a much softer light than a bright lamp. There is a very simple rule for this. If the luminaire has matt glass, use a matt lamp. If it is clear glass, use a clear lamp.

In a children's room we recommend matt lamps. Children tend to look out from their bed and a clear lamp would be too bright.

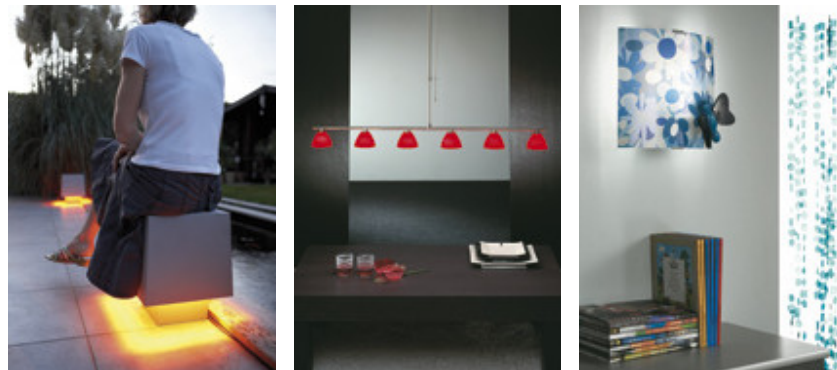
6. Trends in lighting

We can generally say that trends in lighting run parallel with the latest developments in the interior sector.

Retro models are very popular at the moment. Big chandeliers are back as well! Designers take inspiration from old models to come up with new creations. A merger of past and present!



Specific accessories are becoming an integral part of any interior. **And light objects seem to be heading the same way.** In addition to their decorative function in an interior these luminaires also provide light.



The use of bright colours is also becoming more popular in interiors, as well as in lighting. Bright colours are very much in.

Trends in lighting also depend on **technological innovations** of course. New light sources such as the T5 and LED (light emitting diode) fit into elegant designed luminaires thanks to their small size.

